



BULLETRAX IS THE BULLET ACQUISITION COMPONENT OF IBIS. IT DIGITALLY CAPTURES THE SURFACE OF A BULLET IN 2D AND 3D, PROVIDING A TOPOGRAPHIC MODEL OF THE MARKS AROUND ITS CIRCUMFERENCE.

BULLETRAX is equipped with 3D sensor technology custom-designed by LeadsOnline to provide consistent image quality and optimal correlation performance for the specific characteristics of bullets.

Superior imaging makes it possible for IBIS to offer extensive viewing capabilities beyond those of a conventional comparison microscope, for increased identification success rates.

Bullet metadata and images are processed by the worldleading IBIS Correlation Engine to quickly find links between firearm-related crimes by matching bullets fired from the same firearm.

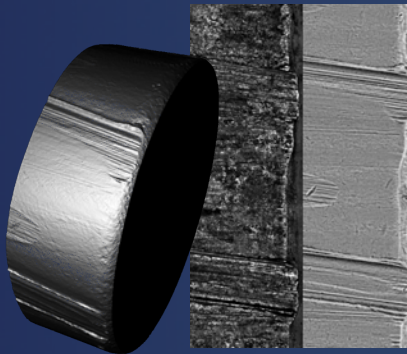


**IBIS CONTINUES TO LEAD THE 3D EVOLUTION IN FIREARM FORENSICS.**

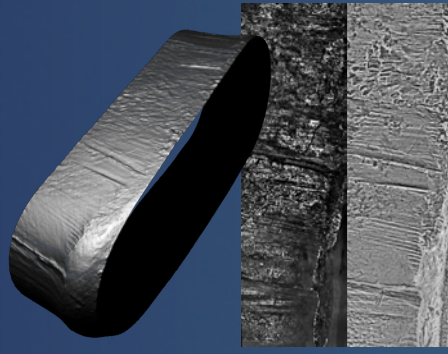
## KEY FEATURES AND CHARACTERISTICS

- + HIGH-DEFINITION 3D TOPOGRAPHY AT THE SUBMICRON LEVEL
- + FULL WRAPAROUND, OR FRAGMENT SECTIONS OF DAMAGED BULLETS
- + AUTOMATED SURFACE DEFORMATION TRACKING
- + RELIABLE IMAGE CAPTURE WITH OPTIMAL FOCUS AND LIGHTING
- + AUTOMATED DETECTION OF REGIONS OF INTEREST
- + EASY TO OPERATE WITH INTUITIVE SOFTWARE

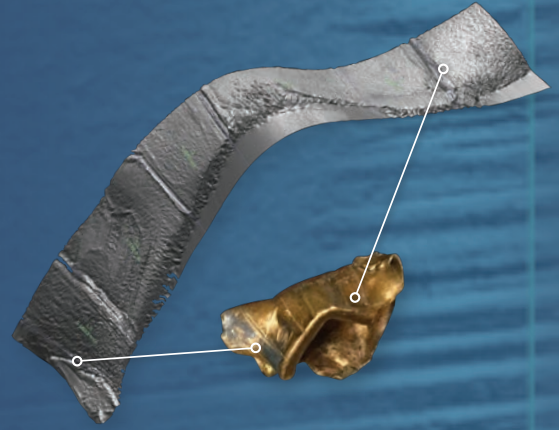
# LARGER FIELD OF VIEW THAT CAPTURES MORE OF THE BULLET SURFACE



| 9 mm – Copper-Jacketed



| Deformed



| Fragmented Bullet Acquisition

## FASTER ACQUISITION OF PRISTINE AND DAMAGED BULLETS

Intelligent surface-tracking technology automatically adapts to the deformations of damaged and fragmented bullets.

### BULLET TYPES

	CONVENTIONAL	POLYGONAL	UNRIFLED
UNDAMAGED (INCL. TEST FIRED)	✓	✓	✓
DAMAGED/DEFORMED	✓	✓	✓
FRAGMENTED	✓	✓	✓

All calibers ranging from 0.17 to 0.50



## SIMPLER BULLET MOUNTING PROCESS



+  
IDEAL FOR CHALLENGING BULLET IDENTIFICATIONS

+ ADVANCE MORE CASES FASTER  
leadsonline.com | f in t v

©2024 LeadsOnline, LLC. All rights reserved. Reproduction in any manner whatsoever without the written permission of LeadsOnline, LLC. is strictly forbidden. Details and specifications subject to change without notice.

**LEADSONLINE**  
[formerly Forensic Technology]